

## Polarization Insensitive Isolator(850nm)

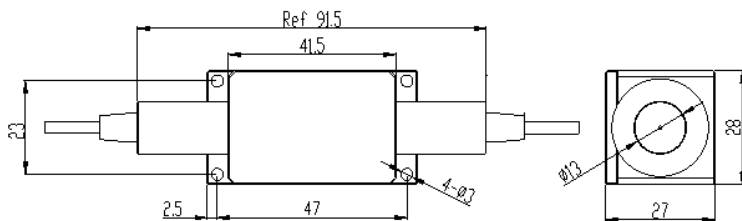
<b>Features</b>	
High isolation Low PDL & Insertion loss High stability and reliability	
<b>Application</b>	
Fiber Amplifier Testing instruments	

### Specifications

Parameter	Value
Center wavelength(nm)	850
Bandwidth(nm)	±10
Peak isolation (dB)	30~32
Isolation at $\lambda_c$ 23°C (dB)	≥25
Typ.Insertion Loss at 23°C (dB)	0.8
Insertion Loss at 23°C (dB)	≤1.2
PDL (dB)	≤0.15
Return loss (Input/output) (dB)	≥50/50
Power handling (mW)	500
Fiber Type	HI780
Operating temperature (°C)	0 ~ +50
Storage temperature (°C)	-20 ~ +75
Package(mm)	91.5x27x28

\*Above specifications are for devices without the connectors.

### Package Dimensions



### Ordering Information

IS	Wavelength	Pigtail Type	Fiber Type	Length	Connector	Package size
	<b>850</b>	250=250um bare fiber 900=900um loose tube 3000=3mm loose tube	<b>7=HI780</b>	0.8=0.8 1= 1m	NE=None FA=FC/APC FC=FC/UPC SA=SC/APC SC=SC/UPC LC=LC/UPC LA=LC/APC XX=Other	91.5x27x 28